



Universal Acre Meter Installation Instructions

General Information

These Instructions explain how to install the 589-415A Acre Meter Kit Wheel or the 589-427A Gang Mount Acre Meter Kit. The acre meter program chart applies to the meter being mounted on wheel or turbo blade.

Tools Required

- Basic Hand Tools
- Lug Wrench or Air Impact
- Torque Wrench

Models Covered

Turbo-Till	Disk Harrow
Turbo-Chopper	Plains Plow
Turbo Max	Field Cultivator
Turbo Chisel	
Discovator	
Discovator DVN	



Figure 1
Electronic Acremeter

27378

589-415A Acre Meter Kit Wheel

Part Number	Description	Qty.
586-593D	8 - BOLT HUBOMETER MOUNT	1
586-594D	6 - BOLT HUBOMETER MOUNT	1
891-420C	ELECTRONIC ACRE/HECT-ARE METER	1

589-427A Gang Mount Acre Meter Kit

Part Number	Description	Qty.
589-151D	PART ACRE METER	1
589-428H	ACRE METER SUB ASSY	1
802-183C	RHSNB 1/2-13X1 GR5	2
803-342C	NUT HEX TOP LOCK 1/2-13PLT	2
891-420C	ELECTRONIC ACRE/HECT-ARE METER	1

Refer to Figure 2

Note: The wheel mount will bolt on the same for either a 6 or 8 bolt wheel but will use either the 596-593D for 6-bolt and the 596-594D for 8-bolt. Mount acre meter on either outside wing wheel.

1. Bolt the 891-420C acre meter ① to the appropriate 596-593D or 596-594D hubometer mount ② with the 1/2 lock nut ③ provided with acre meter.
2. Tighten top lock nut to secure to bracket.
3. Take two of the lug nuts ④ (opposite of the first one) off, slide hubometer mount ② over lug bolts and re-install lug nuts ④ turned around with flat part of nut against mount.

Note: Torque lug nuts to specs. 1/2"-20 (75-85 ft-lbs), 9/16"-18 (80-90 ft-lbs), 5/8"-18 (85-100 ft-lbs).

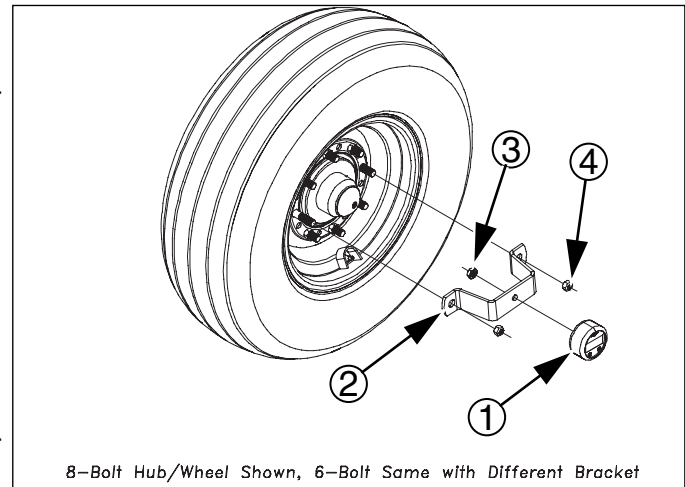


Figure 2
Wheel Hub Assembly

42289

Refer to Figure 3

4. Remove the castle nut bolts ① from both ends of gangs.
5. Remove castle nuts ② from both ends of gangs.
6. Remove 2 flat washers ③ or 1/4" thickness from opposite end of duratight washer.
7. Leave all washers ④ on duratight end, unless opposite end does not have at least 2 washers, then washer may be removed from this end.

Note: When the 589-151D bracket is used on a 1 3/4" gang bolt, the center knock will need removed to fit over gang bolt.

8. Slide the 589-151D bracket ⑤ over gang bolt.
9. Re attach castle nuts ② on both ends and tighten.

Note: Torque 1 3/4"-5 gang bolt to 850 Foot-pounds (165 lbs on 5' cheater) or 1 1/2-6 750 Foot-pounds (175 lbs on 4' cheater). Align slot in castle nut with hole in gang bolt.

10. Re attach bolts ① with a flat washer, one each of castle nut ②, secure with lock nut.
11. Attach 891-420C acre meter ⑥ to 589-428H acre meter bracket ⑦ with 1/2 lock nut ⑧ provided with acre meter.
12. Attach 589-428H acre meter bracket ⑦ to 589-151D bracket ⑤, secure with 802-183C carriage bolts ⑨ and 803-342C top lock nuts.

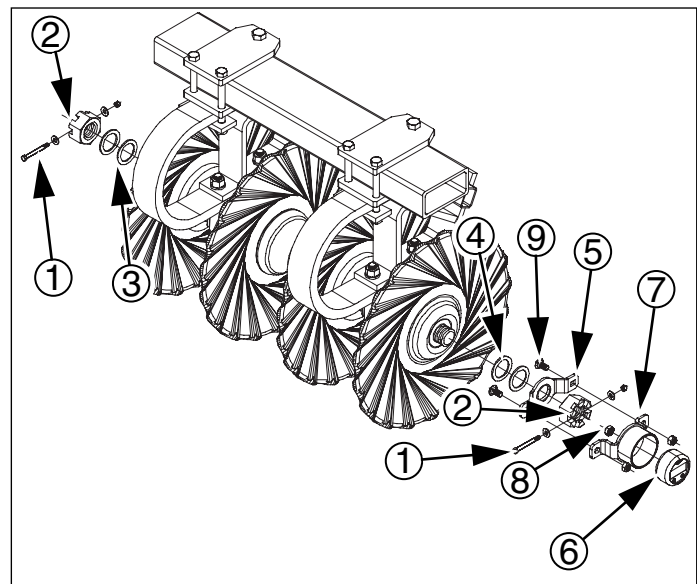


Figure 3
Gang Mount Assembly

42394

Electronic Hubodometer

To program the electronic hubodometer use the magnetic programming tool included with the meter. A typical permanent magnet will also work. The tool is used to initialize and configure the hubodometer by touching it to sensor locations on the face of the meter. The hubometer is versatile enough to work with any tire size as well

as to be adjusted for applications with the unit of measure in miles, kilometers, acres and hectares. Use the Acre Meter Conversion Chart (for working width and tire size) along with the Programming Mode instructions to program the Acre Meter.

Programming Mode

Refer to Figure 4

- The unit enters programming mode when the magnetic programming tool is held on the left sensor for 6 seconds.
- The display will turn on and show the serial number for 6 seconds. If the programming magnet is continuously applied during the time the serial number is shown and for an additional 8 seconds, the meter will wait for the magnet to be drawn and then will enter the programming mode.
- Once active, there is a 10 second time-out if no further user input is received and the unit returns to the previous mode.
- The display will show the prompt PROG. Each tap on the left Mode button advances the programming mode to the next mode. While programming the meter each tap on the right sensor changes the current item based on the mode.

Mode 1: Set Unit of Measure

- The display shows "UNITS" and the current measurement unit of measure. All other display features are off. To change unit of measure tap the right sensor to toggle through each unit of measure mode (HECTARES, MILES, KILOMETERS, and back to ACRES). Tapping left mode button again changes to Mode 2.

Mode 2: Set Counter Ratio

Note: To find the correct ratio value for your machine see the Acre Meter Conversion Chart on next page.

- This mode is used to set the counter ratio for the unit of measure that is currently displayed. All display features are off except the ratio number (showing the current ratio value). The left most digit of the ratio will be flashing. To change the digit value, tap the right sensor. The digit will then increment. Continue to tap the right sensor to increment to the desired value.
- To select a different digit tap the left program sensor to sequence through the digits and then tap the right sensor when the desired digit is flashing to increment the value as above/ When programming each digit a change from 9 to 0 does not affect the next digit. Tapping the left mode button again advances to the next digit. Once the right most digit has been passed the

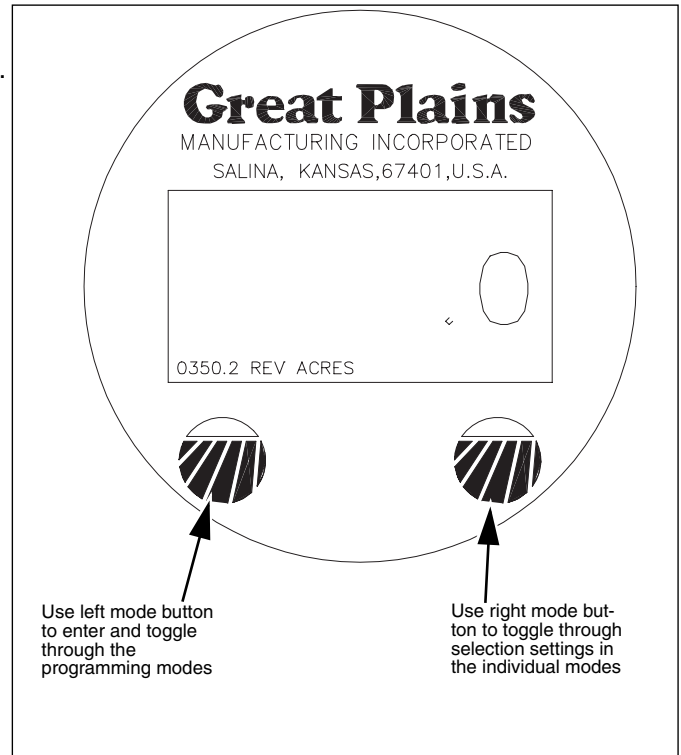


Figure 4
Meter Display

27380

display shows the entered value. Tapping the left mode button again changes to Mode 3.

Mode 3: Preset

- At this point the user can set the meter to the desired starting count. This does not affect non-resettable background total. The factory default is "000000" if this feature is not needed, tap the left target repeatedly and leave the digits set to zero. Tapping the right target will increment the digit. Tapping the left target once will move it to the next digit to the right. When all the digits are set, tapping the left target once more will make the display show: Example: set to 125750.

Mode 4: Security Lock

- This is where the user will turn on or off the security lock feature. Tapping the right target will toggle it between "ON" and "OFF". Warning-If the Security lock feature is set to "ON" when the units leave the program

mode, the unit will never enter the program mode again. If an error was made, the unit will need to be replaced. The serial # and the background total however are still viewable by holding the magnet on the left target as described above.

- If the security feature is left off, tapping the left target once more will make the display show PROG.
- PROG will be display for about 10 seconds. If a programming error was made, tapping the left target once more before the 10 seconds has elapsed will send the RT1000 back to the beginning of the program mode where the error can be corrected if need be. At this point leaving the RT1000 untouched will allow it to leave the programming mode and after 10 seconds the display will show: Example: 125750.0 (or preset value).
- If the security feature is turned on, tapping the left target once more will make the display show y n. The unit is now asking you to confirm that you want the security feature on. Tap the left target for YES, the right target for NO. Tapping the left target (y) will make the display exit the program mode and lock the unit. The display will show: Example 125750.0 (or preset value).
- Tapping the right target (n) will return the display to SEC OFF.

Exiting Program Mode

- When the PROG prompt is displayed and there is no input activity for 10 seconds, the unit will return to the previous state prior to entering programming mode.

Normal Operation

Idle (Wheel has not been turning)

- The electronic hubodometer waits in a low power consumption mode. The unit will go into active mode if motion is detected or into programming mode if activated by a programming tool. The meter display is on during idle mode and displays the current total. If the meter is in idle mode for more than 1 hour the display turns off until it is activated. To reactivate the display after it has gone off, but before starting to turn again touch the programming magnet to the left sensor.

Active Mode: Wheel starting to turn

- The display turns off once the wheel is turning. The hubodometer monitors the wheel position by polling the 2 Hall-Effect motion sensors at a sample rate that is based on current speed of wheel.

Active Mode: Wheel stops turning

- When the meter is at rest for a minimum of 15 seconds, the display is enabled and shows the total count and measurement units. The meter will enter idle mode and after 1 hour of no activity the display will turn off.

Acre Meter Conversion Chart

WORKING WIDTH	8' 9"	11' 3"	11' 8"	13' 2"	13' 9"	15' 6"	15' 8"	15' 11"	16' 3"	17' 8"	18'	18' 3"	18' 9"	20'
MODEL #S	TCN5107	TCN5309	1200TT	1200TM	TCN5311	1500TC	1500TM	8315DVN	TCN5313	1800TT	1800TM	8318DVN	TC5115	8321DV
		TC5109	1200TC		TC5111	1500TT			TC5113		1800TC		TC5315	
TIRE SIZE														
6.70 X 15	725.87	564.57	544.41	482.38	461.92	409.77	405.41	399.04	390.86	359.51	352.86	348.02	338.74	317.57
9.5L X 15	688.24	535.30	516.18	457.38	437.97	388.52	384.39	378.35	370.59	340.87	334.56	329.98	321.18	301.11
11L X 15	693.84	539.65	520.38	461.09	441.53	391.68	387.52	381.43	373.60	343.65	337.28	332.66	323.79	303.55
12.5L X 15	645.83	502.31	484.37	429.19	410.98	364.58	360.70	355.04	347.76	319.87	313.95	309.65	301.39	282.55
10 - 16.5	656.48	510.59	492.36	436.27	417.76	370.59	366.65	360.89	353.49	325.14	319.12	314.75	306.36	287.21
33 X 15.5 - 16.5	579.99	451.11	435.00	385.44	369.09	327.42	323.93	318.85	312.30	287.26	281.94	278.08	270.66	253.75
12.5L X 16.5 GALAXY	590.54	459.31	442.91	392.45	375.80	333.37	329.83	324.64	317.99	292.49	287.07	283.14	275.59	258.36
32 -15.5 X 16.5 GALAXY	594.24	462.19	445.68	394.91	378.16	335.46	331.89	326.68	319.98	294.32	288.87	284.91	277.31	259.98
380/55R16.5	579.99	451.11	435.00	385.44	369.09	327.42	323.93	318.85	312.30	287.26	281.94	278.08	270.66	253.75
440/55R18	515.00	400.55	386.25	342.24	327.72	290.72	287.63	283.11	277.31	255.07	250.34	246.92	240.33	225.31
20" Turbo Blade	963.54	749.42	722.65	640.33	613.16	543.93	538.15	529.69	518.83	477.22	468.39	461.97	449.65	421.55
22" Turbo Blade	865.79	673.39	649.34	575.37	550.96	488.75	483.55	475.96	466.19	428.81	420.87	415.10	404.03	378.78

WORKING WIDTH	21' 3"	21' 9"	22' 4"	23'	23' 10"	24'	24' 5"	25' 3"	26'	26' 3"	27' 9"	28'	29' 4"	30'
MODEL #S	TC5317	8321DVN	9322PP	3323DH	2400TC	2400TT	2400TM	8326DV	9326PP	TC5321	8328FC	8328DV	UT3030	3000TT
				8323FC	TC5319	6424HD		3326DH				3329DH		4330DH
					8324DV									6630HD
TIRE SIZE														
6.70 X 15	298.89	292.02	284.39	276.15	266.49	264.64	260.13	251.54	244.28	241.96	228.88	226.84	216.52	211.71
9.5L X 15	283.39	276.88	269.65	261.83	252.68	250.92	246.64	238.50	231.62	229.41	217.01	215.08	205.30	200.74
11L X 15	285.70	279.13	271.84	263.96	254.73	252.96	248.64	240.44	233.50	231.28	218.78	216.82	206.97	202.37
12.5L X 15	265.93	259.82	253.03	245.70	237.11	235.46	231.44	223.80	217.35	215.28	203.64	201.82	192.65	188.37
10 - 16.5	270.31	264.10	257.20	249.75	241.01	239.34	235.26	227.49	220.93	218.83	207.00	205.15	195.82	191.47
33 X 15.5 - 16.5	238.82	233.33	227.24	220.65	212.94	211.46	207.85	200.99	195.19	193.33	182.88	181.25	173.01	169.17
12.5L X 16.5 GALAXY	243.17	237.58	231.37	224.66	216.81	215.30	211.63	204.64	198.74	196.85	186.21	184.54	176.16	172.24
32 -15.5 X 16.5 GALAXY	244.69	239.06	232.82	226.07	218.17	216.65	212.95	205.93	199.99	198.08	187.37	185.70	177.26	173.32
380/55R16.5	238.82	233.33	227.24	220.65	212.94	211.46	207.85	200.99	195.19	193.33	182.88	181.25	173.01	169.17
440/55R18	212.06	207.18	201.77	195.92	189.07	187.76	184.55	178.46	173.32	171.67	162.39	160.94	153.62	150.21
20" Turbo Blade	396.75	387.63	377.51	366.56	353.75	351.29	345.30	333.90	324.27	321.18	303.82	301.11	287.42	281.03
22" Turbo Blade	356.50	348.31	339.21	329.38	317.86	315.65	310.27	300.03	291.37	288.60	273.00	270.56	258.26	252.52

WORKING WIDTH	30' 6"	30' 8"	32'	32' 6"	33'	33' 4"	34' 8"	35' 6"	36'	39' 6"	40'	40' 6"	42'	42' 9"
MODEL #S	3000TC	3000TM	8333DV	8332FC	4333DH	9533PP	UT5036	3500TM	8537DV	8539FC	4000TT	4000TC	6642HD	8544DV
									4336DH	4000TM		9540PP		UT5042
									8636HD					
									8336FC					
TIRE SIZE														
6.70 X 15	208.24	207.11	198.48	195.43	192.47	190.54	183.21	178.91	176.43	160.79	158.78	156.82	151.22	148.57
9.5L X 15	197.45	196.37	188.19	185.30	182.49	180.66	173.71	169.64	167.28	152.46	150.55	148.69	143.38	140.87
11L X 15	199.05	197.97	189.72	186.80	183.97	182.13	175.13	171.02	168.64	153.70	151.78	149.90	144.55	142.01
12.5L X 15	185.28	184.27	176.59	173.88	171.24	169.53	163.01	159.18	156.97	143.06	141.28	139.53	134.55	132.19
10 - 16.5	188.33	187.31	179.51	176.74	174.07	172.33	165.70	161.81	159.56	145.42	143.60	141.83	136.77	134.37
33 X 15.5 - 16.5	166.39	165.49	158.59	156.15	153.79	152.25	146.39	142.96	140.97	128.48	126.87	125.31	120.83	118.71
12.5L X 16.5 GALAXY	169.42	168.50	161.48	158.99	156.58	155.02	149.06	145.56	143.53	130.82	129.18	127.59	123.03	120.87
32 -15.5 X 16.5 GALAXY	170.48	169.55	162.49	159.99	157.56	155.99	149.99	146.47	144.43	131.64	129.99	128.39	123.80	121.63
380/55R16.5	166.39	165.49	158.59	156.15	153.79	152.25	146.39	142.96	140.97	128.48	126.87	125.31	120.83	118.71
440/55R18	147.74	146.94	140.82	138.65	136.55	135.19	129.99	126.94	125.17	114.08	112.66	111.26	107.29	105.41
20" Turbo Blade	276.43	274.92	263.47	259.41	255.48	252.93	243.20	237.49	234.19	213.44	210.77	208.17	200.74	197.22
22" Turbo Blade	248.38	247.03	236.74	233.10	229.57	227.27	218.53	213.40	210.43	191.79	189.39	187.05	180.37	177.21

WORKING WIDTH	44'	44' 4"	45'	46' 6"	48'	48' 9"	50' 9"	51'	51' 8"	52'	55' 9"	60' 6"
MODEL #S	8544FC	9744PP	6845HD	8548DV	9748PP	8548FC	8552DV	6851HD	9752PP	UT5052	9756PP	8560FC
					6848HD			8551FC			8556FC	
TIRE SIZE												
6.70 X 15	144.35	143.26	141.14	136.59	132.32	130.29	125.15	124.54	122.93	122.14	113.93	104.98
9.5L X 15	136.87	135.84	133.82	129.51	125.46	123.53	118.66	118.08	116.56	115.81	108.02	99.54
11L X 15	137.98	136.94	134.91	130.56	126.48	124.53	119.63	119.04	117.50	116.75	108.90	100.35
12.5L X 15	128.43	127.47	125.58	121.53	117.73	115.92	111.35	110.80	109.37	108.67	101.36	93.41
10 - 16.5	130.55	129.57	127.65	123.53	119.67	117.83	113.19	112.63	111.18	110.46	103.03	94.95
33 X 15.5 - 16.5	115.34	114.47	112.78	109.14	105.73	104.10	100.00	99.51	98.22	97.60	91.03	83.88
12.5L X 16.5 GALAXY	117.44	116.55	114.83	111.12	107.65	106.00	101.82	101.32	100.01	99.37	92.69	85.41
32 -15.5 X 16.5 GALAXY	118.17	117.29	115.55	111.82	108.33	106.66	102.46	101.95	100.64	99.99	93.27	85.94
380/55R16.5	115.34	114.47	112.78	109.14	105.73	104.10	100.00	99.51	98.22	97.60	91.03	83.88
440/55R18	102.41	101.64	100.14	96.91	93.88	92.44	88.79	88.36	87.22	86.66	80.83	74.48
20" Turbo Blade	191.61	190.17	187.35	181.31	175.65	172.94	166.13	165.31	163.18	162.13	151.23	139.35
22" Turbo Blade	172.17	170.88	168.35	162.92	157.83	155.40	149.27	148.54	146.63	145.69	135.89	125.22

Great Plains Manufacturing, Inc.

Corporate Office P.O. Box 5060
Salina, Kansas 67402-5060 USA



Universal Acre Meter Installation Instructions

General Information

These Instructions explain how to install the 589-415A Acre Meter Kit Wheel or the 589-427A Gang Mount Acre Meter Kit. The acre meter program chart applies to the meter being mounted on wheel or turbo blade.

Tools Required

- Basic Hand Tools
- Lug Wrench or Air Impact
- Torque Wrench

Models Covered

Turbo-Till	Disk Harrow
Turbo-Chopper	Plains Plow
Turbo Max	Field Cultivator
Turbo Chisel	
Discovator	
Discovator DVN	



Figure 1
Electronic Acremeter

27378

589-415A Acre Meter Kit Wheel

Part Number	Description	Qty.
586-593D	8 - BOLT HUBOMETER MOUNT	1
586-594D	6 - BOLT HUBOMETER MOUNT	1
891-420C	ELECTRONIC ACRE/HECT-ARE METER	1

589-427A Gang Mount Acre Meter Kit

Part Number	Description	Qty.
589-151D	PART ACRE METER	1
589-428H	ACRE METER SUB ASSY	1
802-183C	RHSNB 1/2-13X1 GR5	2
803-342C	NUT HEX TOP LOCK 1/2-13PLT	2
891-420C	ELECTRONIC ACRE/HECT-ARE METER	1

Refer to Figure 2

Note: The wheel mount will bolt on the same for either a 6 or 8 bolt wheel but will use either the 596-594D for 6-bolt and the 596-593D for 8-bolt. Mount acre meter on either outside wing wheel.

1. Bolt the 891-420C acre meter ① to the appropriate 596-593D or 596-594D hubometer mount ② with the 1/2 lock nut ③ provided with acre meter.
2. Tighten top lock nut to secure to bracket.
3. Take two of the lug nuts ④ (opposite of the first one) off, slide hubometer mount ② over lug bolts and re-install lug nuts ④ turned around with flat part of nut against mount.

Note: Torque lug nuts to specs. 1/2"-20 (75-85 ft-lbs), 9/16"-18 (80-90 ft-lbs), 5/8"-18 (85-100 ft-lbs).

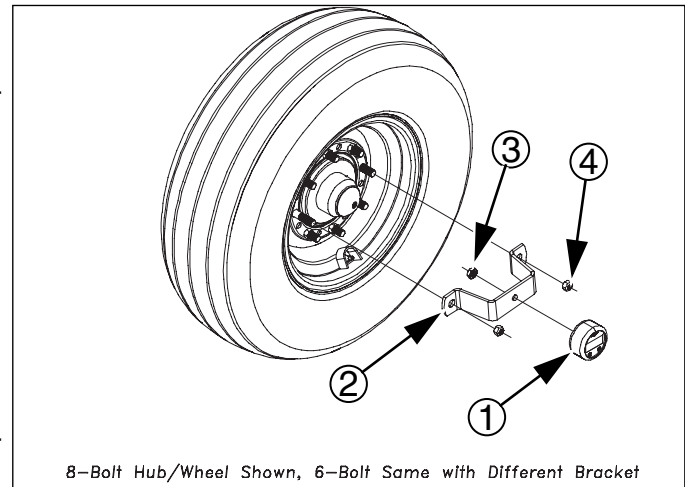


Figure 2
Wheel Hub Assembly

42289

Refer to Figure 3

4. Remove the castle nut bolts ① from both ends of gangs.
5. Remove castle nuts ② from both ends of gangs.
6. Remove 2 flat washers ③ or 1/4" thickness from opposite end of duratight washer.
7. Leave all washers ④ on duratight end, unless opposite end does not have at least 2 washers, then washer may be removed from this end.

Note: When the 589-151D bracket is used on a 1 3/4" gang bolt, the center knock will need removed to fit over gang bolt.

8. Slide the 589-151D bracket ⑤ over gang bolt.
9. Re attach castle nuts ② on both ends and tighten.

Note: Torque 1 3/4"-5 gang bolt to 850 Foot-pounds (165 lbs on 5' cheater) or 1 1/2-6 750 Foot-pounds (175 lbs on 4' cheater). Align slot in castle nut with hole in gang bolt.

10. Re attach bolts ① with a flat washer, one each of castle nut ②, secure with lock nut.
11. Attach 891-420C acre meter ⑥ to 589-428H acre meter bracket ⑦ with 1/2 lock nut ⑧ provided with acre meter.
12. Attach 589-428H acre meter bracket ⑦ to 589-151D bracket ⑤, secure with 802-183C carriage bolts ⑨ and 803-342C top lock nuts.

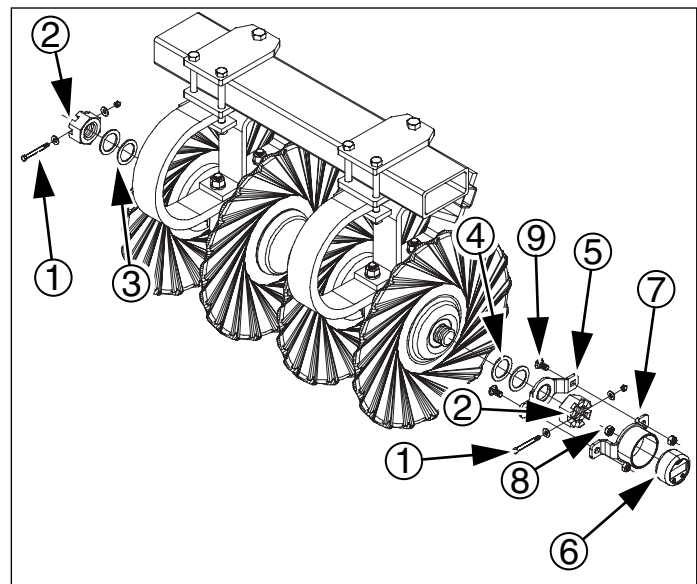


Figure 3
Gang Mount Assembly

42394

Electronic Hubodometer

To program the electronic hubodometer use the magnetic programming tool included with the meter. A typical permanent magnet will also work. The tool is used to initialize and configure the hubodometer by touching it to sensor locations on the face of the meter. The hubometer is versatile enough to work with any tire size as well

as to be adjusted for applications with the unit of measure in miles, kilometers, acres and hectares. Use the Acre Meter Conversion Chart (for working width and tire size) along with the Programming Mode instructions to program the Acre Meter.

Programming Mode

Refer to Figure 4

- The unit enters programming mode when the magnetic programming tool is held on the left sensor for 6 seconds.
- The display will turn on and show the serial number for 6 seconds. If the programming magnet is continuously applied during the time the serial number is shown and for an additional 8 seconds, the meter will wait for the magnet to be drawn and then will enter the programming mode.
- Once active, there is a 10 second time-out if no further user input is received and the unit returns to the previous mode.
- The display will show the prompt PROG. Each tap on the left Mode button advances the programming mode to the next mode. While programming the meter each tap on the right sensor changes the current item based on the mode.

Mode 1: Set Unit of Measure

- The display shows "UNITS" and the current measurement unit of measure. All other display features are off. To change unit of measure tap the right sensor to toggle through each unit of measure mode (HECTARES, MILES, KILOMETERS, and back to ACRES). Tapping left mode button again changes to Mode 2.

Mode 2: Set Counter Ratio

Note: To find the correct ratio value for your machine see the Acre Meter Conversion Chart on next page.

- This mode is used to set the counter ratio for the unit of measure that is currently displayed. All display features are off except the ratio number (showing the current ratio value). The left most digit of the ratio will be flashing. To change the digit value, tap the right sensor. The digit will then increment. Continue to tap the right sensor to increment to the desired value.
- To select a different digit tap the left program sensor to sequence through the digits and then tap the right sensor when the desired digit is flashing to increment the value as above/ When programming each digit a change from 9 to 0 does not affect the next digit. Tapping the left mode button again advances to the next digit. Once the right most digit has been passed the

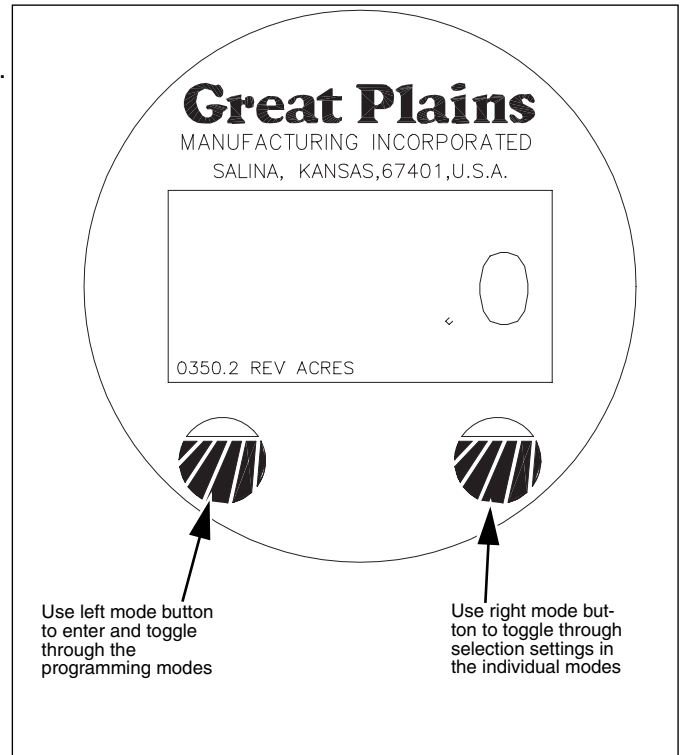


Figure 4
Meter Display

27380

display shows the entered value. Tapping the left mode button again changes to Mode 3.

Mode 3: Preset

- At this point the user can set the meter to the desired starting count. This does not affect non-resettable background total. The factory default is "000000" if this feature is not needed, tap the left target repeatedly and leave the digits set to zero. Tapping the right target will increment the digit. Tapping the left target once will move it to the next digit to the right. When all the digits are set, tapping the left target once more will make the display show: Example: set to 125750.

Mode 4: Security Lock

- This is where the user will turn on or off the security lock feature. Tapping the right target will toggle it between "ON" and "OFF". Warning-If the Security lock feature is set to "ON" when the units leave the program

mode, the unit will never enter the program mode again. If an error was made, the unit will need to be replaced. The serial # and the background total however are still viewable by holding the magnet on the left target as described above.

- If the security feature is left off, tapping the left target once more will make the display show PROG.
- PROG will be display for about 10 seconds. If a programming error was made, tapping the left target once more before the 10 seconds has elapsed will send the RT1000 back to the beginning of the program mode where the error can be corrected if need be. At this point leaving the RT1000 untouched will allow it to leave the programming mode and after 10 seconds the display will show: Example: 125750.0 (or preset value).
- If the security feature is turned on, tapping the left target once more will make the display show y n. The unit is now asking you to confirm that you want the security feature on. Tap the left target for YES, the right target for NO. Tapping the left target (y) will make the display exit the program mode and lock the unit. The display will show: Example 125750.0 (or preset value).
- Tapping the right target (n) will return the display to SEC OFF.

Exiting Program Mode

- When the PROG prompt is displayed and there is no input activity for 10 seconds, the unit will return to the previous state prior to entering programming mode.

Normal Operation

Idle (Wheel has not been turning)

- The electronic hubodometer waits in a low power consumption mode. The unit will go into active mode if motion is detected or into programming mode if activated by a programming tool. The meter display is on during idle mode and displays the current total. If the meter is in idle mode for more than 1 hour the display turns off until it is activated. To reactivate the display after it has gone off, but before starting to turn again touch the programming magnet to the left sensor.

Active Mode: Wheel starting to turn

- The display turns off once the wheel is turning. The hubodometer monitors the wheel position by polling the 2 Hall-Effect motion sensors at a sample rate that is based on current speed of wheel.

Active Mode: Wheel stops turning

- When the meter is at rest for a minimum of 15 seconds, the display is enabled and shows the total count and measurement units. The meter will enter idle mode and after 1 hour of no activity the display will turn off.

Acre Meter Conversion Chart

WORKING WIDTH	8' 9"	11' 3"	11' 8"	13' 2"	13' 9"	15' 6"	15' 8"	15' 11"	16' 3"	17' 8"	18'	18' 3"	18' 9"	20'
MODEL #S	TCN5107	TCN5309	1200TT	1200TM	TCN5311	1500TC	1500TM	8315DVN	TCN5313	1800TT	1800TM	8318DVN	TC5115	8321DV
		TC5109	1200TC		TC5111	1500TT			TC5113		1800TC		TC5315	
TIRE SIZE														
6.70 X 15	725.87	564.57	544.41	482.38	461.92	409.77	405.41	399.04	390.86	359.51	352.86	348.02	338.74	317.57
9.5L X 15	688.24	535.30	516.18	457.38	437.97	388.52	384.39	378.35	370.59	340.87	334.56	329.98	321.18	301.11
11L X 15	693.84	539.65	520.38	461.09	441.53	391.68	387.52	381.43	373.60	343.65	337.28	332.66	323.79	303.55
12.5L X 15	645.83	502.31	484.37	429.19	410.98	364.58	360.70	355.04	347.76	319.87	313.95	309.65	301.39	282.55
10 - 16.5	656.48	510.59	492.36	436.27	417.76	370.59	366.65	360.89	353.49	325.14	319.12	314.75	306.36	287.21
33 X 15.5 - 16.5	579.99	451.11	435.00	385.44	369.09	327.42	323.93	318.85	312.30	287.26	281.94	278.08	270.66	253.75
12.5L X 16.5 GALAXY	590.54	459.31	442.91	392.45	375.80	333.37	329.83	324.64	317.99	292.49	287.07	283.14	275.59	258.36
32 -15.5 X 16.5 GALAXY	594.24	462.19	445.68	394.91	378.16	335.46	331.89	326.68	319.98	294.32	288.87	284.91	277.31	259.98
380/55R16.5	579.99	451.11	435.00	385.44	369.09	327.42	323.93	318.85	312.30	287.26	281.94	278.08	270.66	253.75
440/55R18	515.00	400.55	386.25	342.24	327.72	290.72	287.63	283.11	277.31	255.07	250.34	246.92	240.33	225.31
20" Turbo Blade	963.54	749.42	722.65	640.33	613.16	543.93	538.15	529.69	518.83	477.22	468.39	461.97	449.65	421.55
22" Turbo Blade	865.79	673.39	649.34	575.37	550.96	488.75	483.55	475.96	466.19	428.81	420.87	415.10	404.03	378.78
WORKING WIDTH	21' 3"	21' 9"	22' 4"	23'	23' 10"	24'	24' 5"	25' 3"	26'	26' 3"	27' 9"	28'	29' 4"	30'
MODEL #S	TC5317	8321DVN	9322PP	3323DH	2400TC	2400TT	2400TM	8326DV	9326PP	TC5321	8328FC	8328DV	UT3030	3000TT
				8323FC	TC5319	6424HD		3326DH				3329DH		4330DH
					8324DV									6630HD
TIRE SIZE														
6.70 X 15	298.89	292.02	284.39	276.15	266.49	264.64	260.13	251.54	244.28	241.96	228.88	226.84	216.52	211.71
9.5L X 15	283.39	276.88	269.65	261.83	252.68	250.92	246.64	238.50	231.62	229.41	217.01	215.08	205.30	200.74
11L X 15	285.70	279.13	271.84	263.96	254.73	252.96	248.64	240.44	233.50	231.28	218.78	216.82	206.97	202.37
12.5L X 15	265.93	259.82	253.03	245.70	237.11	235.46	231.44	223.80	217.35	215.28	203.64	201.82	192.65	188.37
10 - 16.5	270.31	264.10	257.20	249.75	241.01	239.34	235.26	227.49	220.93	218.83	207.00	205.15	195.82	191.47
33 X 15.5 - 16.5	238.82	233.33	227.24	220.65	212.94	211.46	207.85	200.99	195.19	193.33	182.88	181.25	173.01	169.17
12.5L X 16.5 GALAXY	243.17	237.58	231.37	224.66	216.81	215.30	211.63	204.64	198.74	196.85	186.21	184.54	176.16	172.24
32 -15.5 X 16.5 GALAXY	244.69	239.06	232.82	226.07	218.17	216.65	212.95	205.93	199.99	198.08	187.37	185.70	177.26	173.32
380/55R16.5	238.82	233.33	227.24	220.65	212.94	211.46	207.85	200.99	195.19	193.33	182.88	181.25	173.01	169.17
440/55R18	212.06	207.18	201.77	195.92	189.07	187.76	184.55	178.46	173.32	171.67	162.39	160.94	153.62	150.21
20" Turbo Blade	396.75	387.63	377.51	366.56	353.75	351.29	345.30	333.90	324.27	321.18	303.82	301.11	287.42	281.03
22" Turbo Blade	356.50	348.31	339.21	329.38	317.86	315.65	310.27	300.03	291.37	288.60	273.00	270.56	258.26	252.52
WORKING WIDTH	30' 6"	30' 8"	32'	32' 6"	33'	33' 4"	34' 8"	35' 6"	36'	39' 6"	40'	40' 6"	42'	42' 9"
MODEL #S	3000TC	3000TM	8333DV	8332FC	4333DH	9533PP	UT5036	3500TM	8537DV	8539FC	4000TT	4000TC	6642HD	8544DV
									4336DH	4000TM		9540PP		UT5042
									8636HD					
									8336FC					
TIRE SIZE														
6.70 X 15	208.24	207.11	198.48	195.43	192.47	190.54	183.21	178.91	176.43	160.79	158.78	156.82	151.22	148.57
9.5L X 15	197.45	196.37	188.19	185.30	182.49	180.66	173.71	169.64	167.28	152.46	150.55	148.69	143.38	140.87
11L X 15	199.05	197.97	189.72	186.80	183.97	182.13	175.13	171.02	168.64	153.70	151.78	149.90	144.55	142.01
12.5L X 15	185.28	184.27	176.59	173.88	171.24	169.53	163.01	159.18	156.97	143.06	141.28	139.53	134.55	132.19
10 - 16.5	188.33	187.31	179.51	176.74	174.07	172.33	165.70	161.81	159.56	145.42	143.60	141.83	136.77	134.37
33 X 15.5 - 16.5	166.39	165.49	158.59	156.15	153.79	152.25	146.39	142.96	140.97	128.48	126.87	125.31	120.83	118.71
12.5L X 16.5 GALAXY	169.42	168.50	161.48	158.99	156.58	155.02	149.06	145.56	143.53	130.82	129.18	127.59	123.03	120.87
32 -15.5 X 16.5 GALAXY	170.48	169.55	162.49	159.99	157.56	155.99	149.99	146.47	144.43	131.64	129.99	128.39	123.80	121.63
380/55R16.5	166.39	165.49	158.59	156.15	153.79	152.25	146.39	142.96	140.97	128.48	126.87	125.31	120.83	118.71
440/55R18	147.74	146.94	140.82	138.65	136.55	135.19	129.99	126.94	125.17	114.08	112.66	111.26	107.29	105.41
20" Turbo Blade	276.43	274.92	263.47	259.41	255.48	252.93	243.20	237.49	234.19	213.44	210.77	208.17	200.74	197.22
22" Turbo Blade	248.38	247.03	236.74	233.10	229.57	227.27	218.53	213.40	210.43	191.79	189.39	187.05	180.37	177.21
WORKING WIDTH	44'	44' 4"	45'	46' 6"	48'	48' 9"	50' 9"	51'	51' 8"	52'	55' 9"	60' 6"		
MODEL #S	8544FC	9744PP	6845HD	8548DV	9748PP	8548FC	8552DV	6851HD	9752PP	UT5052	9756PP	8560FC		
					6848HD			8551FC			8556FC			
TIRE SIZE														
6.70 X 15	144.35	143.26	141.14	136.59	132.32	130.29	125.15	124.54	122.93	122.14	113.93	104.98		
9.5L X 15	136.87	135.84	133.82	129.51	125.46	123.53	118.66	118.08	116.56	115.81	108.02	99.54		
11L X 15	137.98	136.94	134.91	130.56	126.48	124.53	119.63	119.04	117.50	116.75	108.90	100.35		
12.5L X 15	128.43	127.47	125.58	121.53	117.73	115.92	111.35	110.80	109.37	108.67	101.36	93.41		
10 - 16.5	130.55	129.57	127.65	123.53	119.67	117.83	113.19	112.63	111.18	110.46	103.03	94.95		
33 X 15.5 - 16.5	115.34	114.47	112.78	109.14	105.73	104.10	100.00	99.51	98.22	97.60	91.03	83.88		
12.5L X 16.5 GALAXY	117.44	116.55	114.83	111.12	107.65	106.00	101.82	101.32	100.01	99.37	92.69	85.41		
32 -15.5 X 16.5 GALAXY	118.17	117.29	115.55	111.82	108.33	106.66	102.46	101.95	100.64	99.99	93.27	85.94		
380/55R16.5	115.34	114.47	112.78	109.14	105.73	104.10	100.00	99.51	98.22	97.60	91.03	83.88		
440/55R18	102.41	101.64	100.14	96.91	93.88	92.44	88.79	88.36	87.22	86.66	80.83	74.48		
20" Turbo Blade	191.61	190.17	187.35	181.31	175.65	172.94	166.13	165.31	163.18	162.13	151.23	139.35		
22" Turbo Blade	172.17	170.88	168.35	162.92	157.83	155.40	149.27	148.54	146.63	145.69	135.89	125.22		

Great Plains Manufacturing, Inc.

Corporate Office P.O. Box 5060
Salina, Kansas 67402-5060 USA