



YP1225 & YP1625 Yield-Pro Planter

## FP Meter Cover Rivet Kit

Used with:

- YP Planter Seed Meter Cover



*When you see this symbol, the subsequent instructions and warnings are serious - follow without exception. Your life and the lives of others depend on it!*

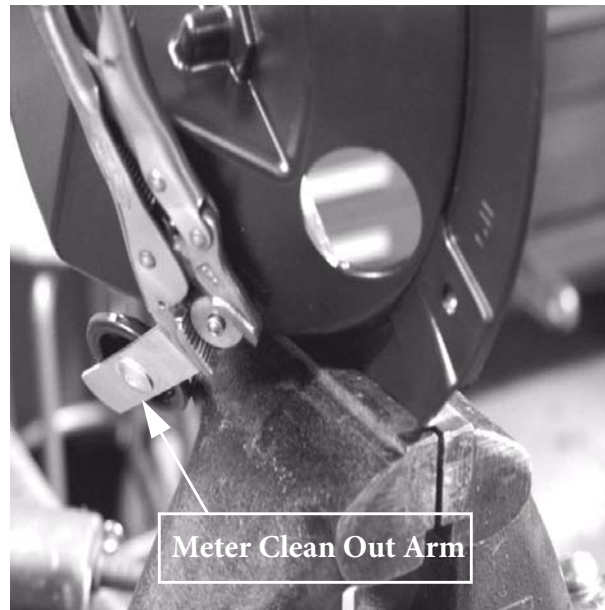
### Assembly Instructions

1. Remove two screws and three bolts from meter cleanout cover. Remove cover from meter.

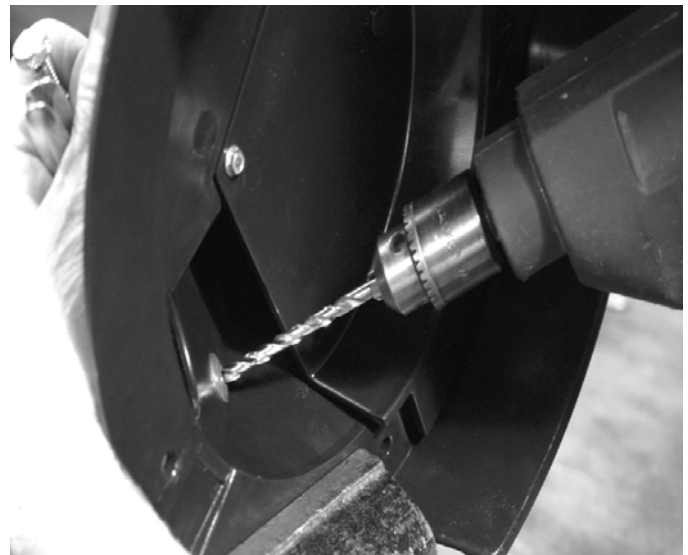
*Refer to Figure 1*

2. Place cover in a clamp so that both hands can be used to remove and replace rivet, fender washer, and cleanout spring bushing.
3. Unplug the meter clean out arm and turn so the arm is pointing away from the opening.
4. Using one hand hold bushing in place with vise grips while drilling out rivet with a 13/64 drill.

**NOTE:** If bushing does not remain in place while drilling out rivet, place vise grips on portion of rivet located on outside of meter cover.



23122



23123

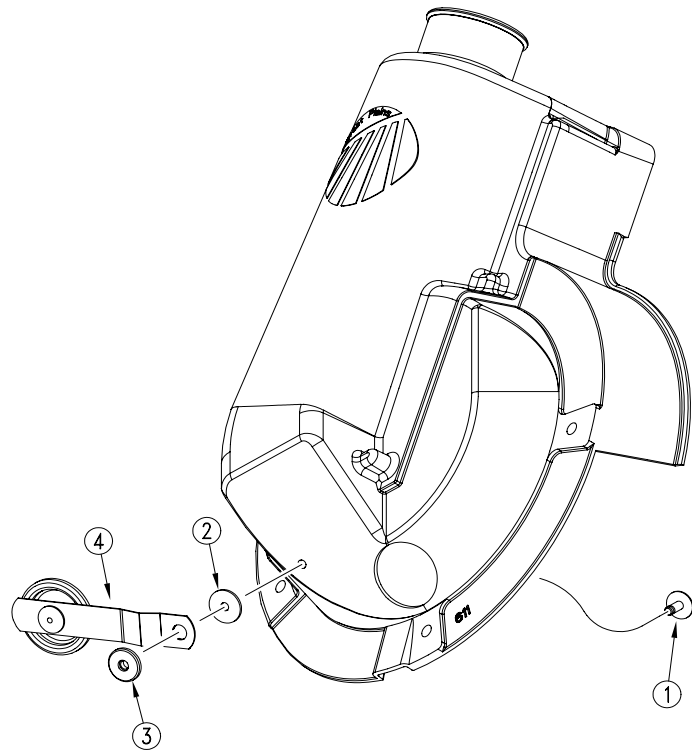
**Figure 1**

## 2 | FP Meter Cover Rivet Kit

### Refer to Figure 2

5. Once rivet is removed, replace washer fender and cleanout spring bushing with the ones provided in the kit. Realign washer fender (2) and meter cleanout arm (4) with hole so that arm is pointing away from the meter cleanout opening.
6. Place cleanout spring bushing (3) on top of meter clean out arm.

NOTE: Be sure to hold spring bushing and meter arm firmly in place so that rivet (1) tightens.



23125

Figure 2

### Refer to Figure 3

7. Place rivet on the inside of the meter cover through hole. Pull rivet with rivet gun.



23124

Figure 3

## 403-181A

Your kit includes:

Qty.	Part No.	Part Description
1	804-206C	Washer Fender 3/16 x 3/4
1	403-150D	Cleanout Spring Bushing
1	800-230C	Rivet 3/16 .251-.375
1	403-183M	FP Meter Cover Rivet Kit Manual