



Press Wheel Mount Update Kit 25 and 25AP Series Implements



When you see this symbol, the subsequent instructions and warnings are serious - follow without exception. Your life and the lives of others depend on it!

General Information

These instructions explain how to install a Press Wheel Mount Update Kit. One kit updates one opener.

These instructions apply to an installation of:

Kit	Kit Description
199-146A	25P LONG PW MOUNT KIT
199-147A	25P MID PW MOUNT KIT

Related Documents

Also available as a reference see the Parts Manual for the particular implement being updated.

118-231P	2025 & 2525P (2007+)
118-232P	2025F & 2525F 3PT
118-949P	1525P
118-999P	2025A & 2525A
196-286P	3N-4025P
401-226P	YP1225/1625
401-312P	3PYP
401-406P	YP2425
401-571P	YP40
401-625P	YP1225A/1625A
401-626P	YP2425A
401-627P	YP4025A
401-651P	YP425A/625A/825A
401-652P	YP425A/625A/825A 3PT
401-647P	3PYPA

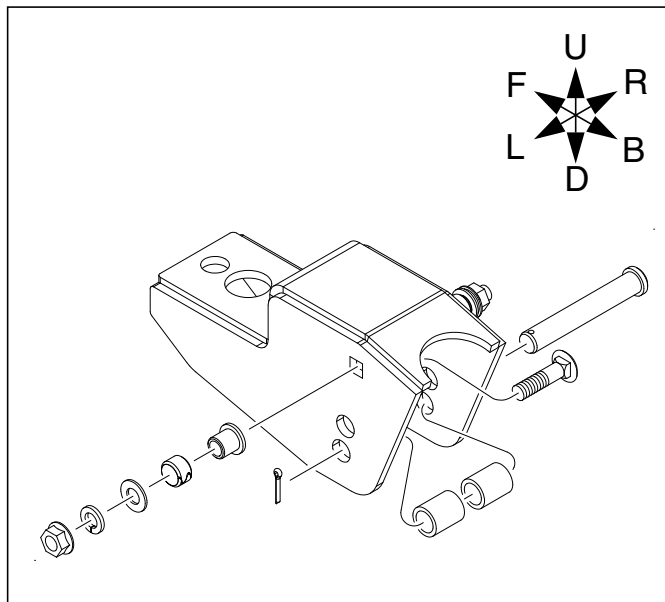
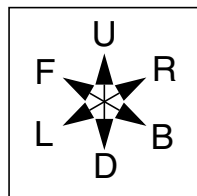


Figure 1
Press Wheel Mount Kit

31489

Notations and Conventions



“Left” and “Right” are facing in the direction of machine travel. An orientation rose in the line art illustrations shows the directions of Left, Right, Front, Back, Up, Down.

Call-Outs

- ① to ⑨ Single-digit callouts identify components in the currently referenced Figure. These numbers may be reused for different items from page to page.
- ⑪ to ⑫ Two-digit callouts in the range 11 to 22 reference new parts from the list on page 5.
- ⑤① to ⑥④ Two-digit callouts in the range 51 to 64 reference existing parts from the list on page 5.

Pre-Assembly Preparation

Tools Required

- suitable tractor for raising implement
- basic hand tools
- dead blow hammer or press

Work Location

1. Move the implement to a location with:
 - flat, smooth surface
 - adequate illumination
 - clear surface beneath for recovery of any falling or dropped parts

Prepare Implement

2. Raise implement with tractor.
3. Secure for safety.

How to Identify Mount Length

To avoid confusion, if implement uses a combination of both long and short press wheel mounts it may be easier to remove and replace all the longs then all the shorts or change out one complete arm at a time.

199-108H 25P LONG PW MOUNT

199-109H 25P MID PW MOUNT



Crushing and Sharp Object Hazards:

Be careful working near openers. Discs and other parts may be sharp.

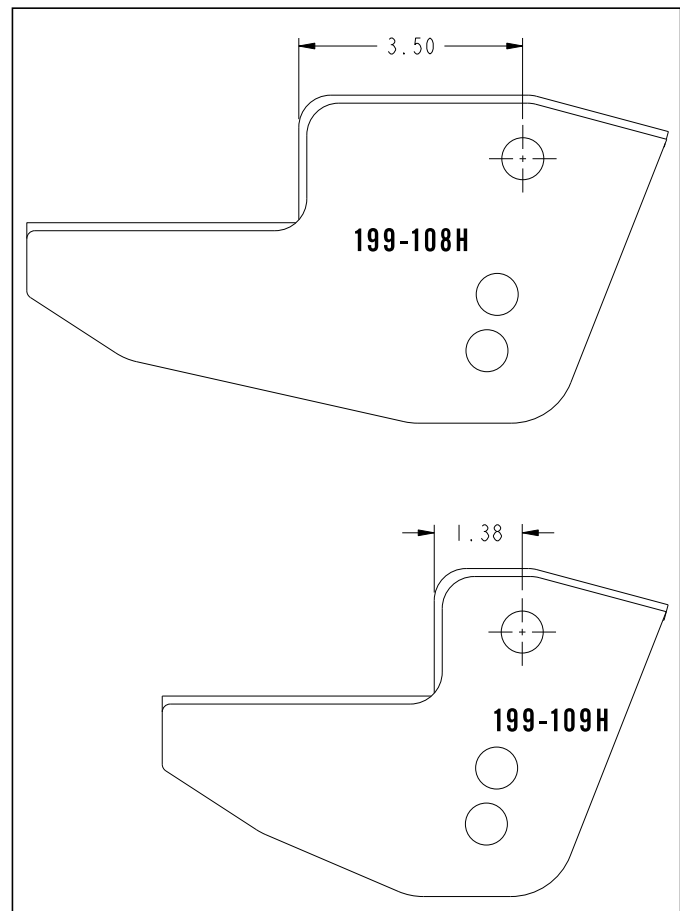


Figure 2
Press Wheel Mount Lengths

31507

Remove Old PW Mount

Refer to Figure 3

With openers slightly off ground spring tension is released.

4. To detach press wheel assembly from opener body ② remove two vertical bolts, washers, and nuts from underside of press wheel mount:
 - ⑤⑥ 802-091C HHCS 1/2-13X1 1/2 GR5
 - ⑤⑦ 802-258C HHCS 1/2-13X1 GR5
 - ⑥① 804-015C WASHER LOCK SPRING 1/2 PLT
 - ⑤⑤ 405-032D 1X12 PW ADJUSTER

Save hardware for reuse.

5. Detach old press wheel mount ⑤② and/or ⑤③ from press wheel arm ① by removing bolt, bushings, pin clevis and other hardware.
 - ⑤⑧ 802-616C HHCS 3/8-16X5 1/2 GR5
 - ⑥① 804-011C WASHER FLAT 3/8 USS PLT
 - ⑤⑨ 803-209C NUT FLANGE LOCK 3/8-16 PLT
 - ⑤① 199-106D PW ANCHOR MOUNT TUBE
 - ⑤④ 199-113D SPRING ALIGNMENT BUSHING
 - ⑥③ 805-417C PIN CLEVIS 5/8 X 3 49/64 USBL
 - ⑥② 805-109C PIN COTTER 1/8 X 1 1/4 PLT
 - ⑥④ 817-083C PW ARM PIVOT BUSHING

This hardware is not reused

6. Discard press wheel mount (it will not be reused):
 - Note: The opener assemblies can have all long or all short mounts or a combination of the two.
 - ⑤② 199-108H 25P LONG PW MOUNT
 - ⑤③ 199-109H 25P MID PW MOUNT

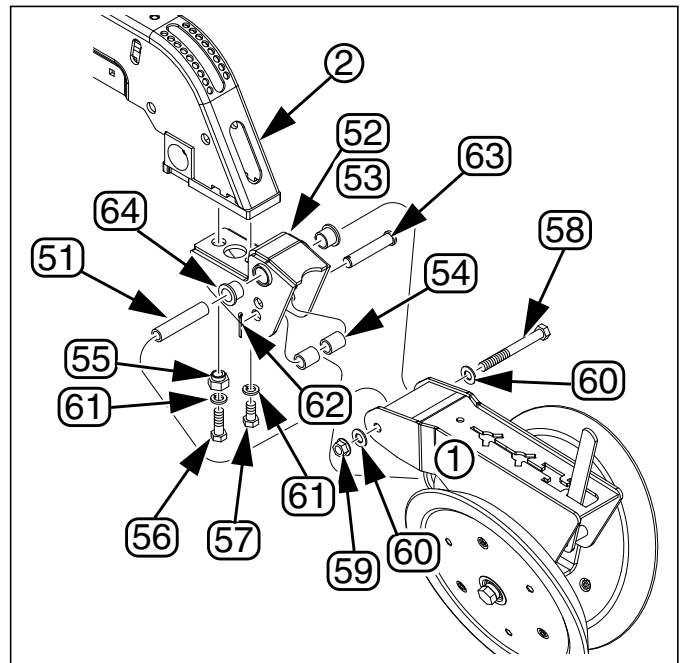


Figure 3
Remove PW Mount

31490

Install New PW Mount

Refer to Figure 4

7. With press or dead blow hammer insert one bushing (22) in hole (3) on each side of the press wheel arm (1). Install one pivot spacer (21) into each bushing.
 - (22) 890-598C BUSHING 3/4OD X 5/8ID X 1/2
 - (21) 890-524C 20 SER PW ARM PIVOT SPACER
8. Select one new press wheel mount (13) or (14):
 - Note: The press wheel assemblies can have either all long or all short mounts or a combination of the two.
 - (13) 199-148H 25P LONG PW MOUNT UPDATE
 - (14) 199-149H 25P MID PW MOUNT UPDATE
9. Slide new press wheel mount (13) or (14) into press wheel arm (1). Insert 2 new carriage bolts (15) in press wheel mount (make sure head is on inside of pw mount with end facing to the outside).
 - (15) 802-030C RHSNB 7/16-14X1 3/4 GR5

Select one each and install on end of each bolt:

- (18) 804-041C WASHER FLAT 7/16 SAE PLT
- (17) 804-014C WASHER LOCK 7/16 PLT
- (16) 803-229C NUT HEX FLANGE LOC 7/16-14

10. Attach the spring on the underside of the press wheel arm (1) and insert top ring of spring between the 2 spring alignment bushings (12).

Attach the spring to the lower holes of the mount (13) with the clevis pin (20) and spacer bushings (12). Secure with cotter pin (19).

- (12) 199-113D SPRING ALIGNMENT BUSHING
- (20) 805-417C PIN CLEVIS 5/8 X 3 49/64 USBL
- (19) 805-109C PIN COTTER 1/8 X 1 1/4 PLT

11. Reinstall press wheel assembly to opener body (2) reusing hardware from prior disassembling.
 - (56) 802-091C HHCS 1/2-13X1 1/2 GR5
 - (57) 802-258C HHCS 1/2-13X1 GR5
 - (61) 804-015C WASHER LOCK SPRING 1/2 PLT
 - (55) 405-032D 1X12 PW ADJUSTER

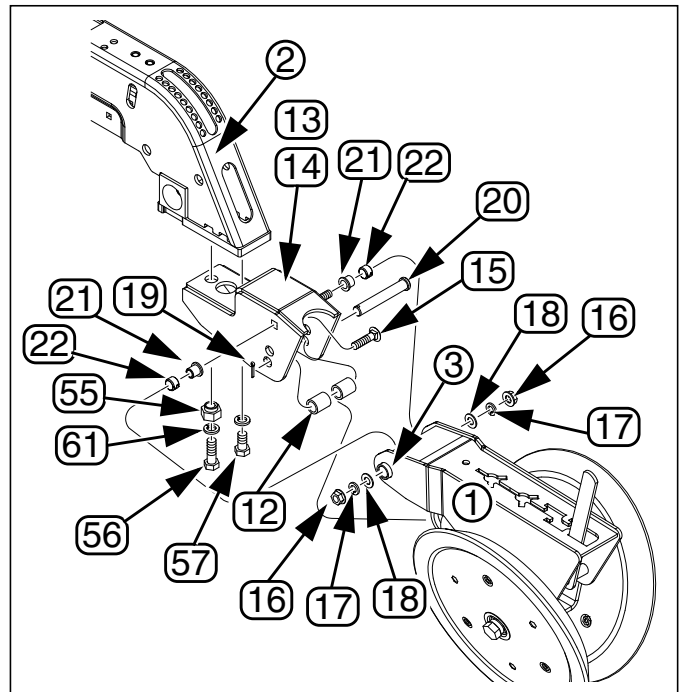


Figure 4
Install New PW Mount Kit

31494

Appendix

Part Lists

New Parts

The part call-out numbers in this list match all Figures in these installation instructions. Part descriptions match those in your updated Parts Manual. Quantities are units ("ea").

Kit Contents

199-146A 25P LONG PW MOUNT KIT
199-147A 25P MID PW MOUNT KIT

Callout	Quantity in Kit:		Part Number	Part Description
	199-146A	199-147A		
11	1	1	199-146M	MANUAL PW MOUNT KIT UPDATE
12	2	2	199-113D	SPRING ALIGNMENT BUSHING
13	1	0	199-148H	25P LONG PW MOUNT UPDATE
14	0	1	199-149H	25P MID PW MOUNT UPDATE
15	2	2	802-030C	RHSNB 7/16-14X1 3/4 GR5
16	2	2	803-229C	NUT HEX FLANGE LOC 7/16-14
17	2	2	804-014C	WASHER LOCK 7/16 PLT
18	2	2	804-041C	WASHER FLAT 7/16 SAE PLT
19	1	1	805-067C	PIN COTTER 1/8 X 3/4
20	1	1	805-417C	PIN CLEVIS 5/8 X 3 49/64 US
21	2	2	890-524C	20 SER PW ARM PIVOT SPACER
22	2	2	890-598C	BUSHING 3/4OD X 5/8ID X 1/2

Existing Parts Affected

The following existing parts are involved in the kit installation. The Disposition column indicates whether the part is left in place, moved or not re-used.

The part call-out numbers in the list matches all Figures in the installation instructions. The descriptions match those in your implement Parts manual.

Callout	Part No.	Part Description	Part Disposition
51	199-106D	PW ANCHOR MOUNT TUBE	Removed. Not reused.
52	199-108H	25P LONG PW MOUNT	Removed. Not reused.
53	199-109H	25P MID PW MOUNT	Removed. Not reused.
54	199-113D	SPRING ALIGNMENT BUSHING	Remove. Not reused.
55	405-032D	1X12 PW ADJUSTER	Removed and re-installed.
56	802-091C	HHCS 1/2-13X1 1/2 GR5	Removed and re-installed.
57	802-258C	HHCS 1/2-13X1 GR5	Removed and re-installed.
58	802-616C	HHCS 3/8-16X5 1/2 GR5	Removed. Not reused.
59	803-209C	NUT FLANGE LOCK 3/8-16 PLT	Removed. Not reused.
60	804-011C	WASHER FLAT 3/8 USS PLT	Removed. Not reused.
61	804-015C	WASHER LOCK SPRING 1/2 PLT	Removed and re-installed.
62	805-109C	PIN COTTER 1/8 X 1 1/4 PLT	Removed. Not reused.
63	805-417C	PIN CLEVIS 5/8 X 3 49/64 USBL	Removed. Not reused.
64	817-083C	PW ARM PIVOT BUSHING	Removed. Not reused.

Abbreviations

3PT	3 Point
A	Air-Pro
F	Fluted
GR5	Grade 5
HHCS	Hex Head Cap Screw
OD	Outside Diameter
PLT	Plated

PW	Press Wheel
RHSNB	Round Head Shank Neck Bolt
SAE	Society of Automotive Engineers
SER	Series
W/	With
X	By

Great Plains Manufacturing, Inc.

Corporate Office P.O. Box 5060
Salina, Kansas 67402-5060 USA