

Update Instructions



30' No-Till Precision Seeding System Auxiliary Down Pressure Spring Assembly Option

Used with:

- 3N-3010P
- 3N-3020P



When you see this symbol, the subsequent instructions and warnings are serious - follow without exception. Your life and the lives of others depend on it!

General Information

These instructions explain how to install the Auxiliary Down Pressure Spring Assembly. This kit increases the down pressure on the contact wheel allowing for more positive contact between the contact wheel and the gage wheel. This modification improves the performance and reliability of the original equipment.

These instructions apply to:

198-957K Aux. Down Pressure Spring Assy.

Manual Update

Refer to the 30' No-Till Precision Seeding System operator's manual for detailed information on safely operating, adjusting, troubleshooting and maintaining the Auxiliary Down Pressure Spring Assembly. Refer to the parts manual for part identification.

196-248M Operator's Manual
196-248P Parts Manual

Before You Start

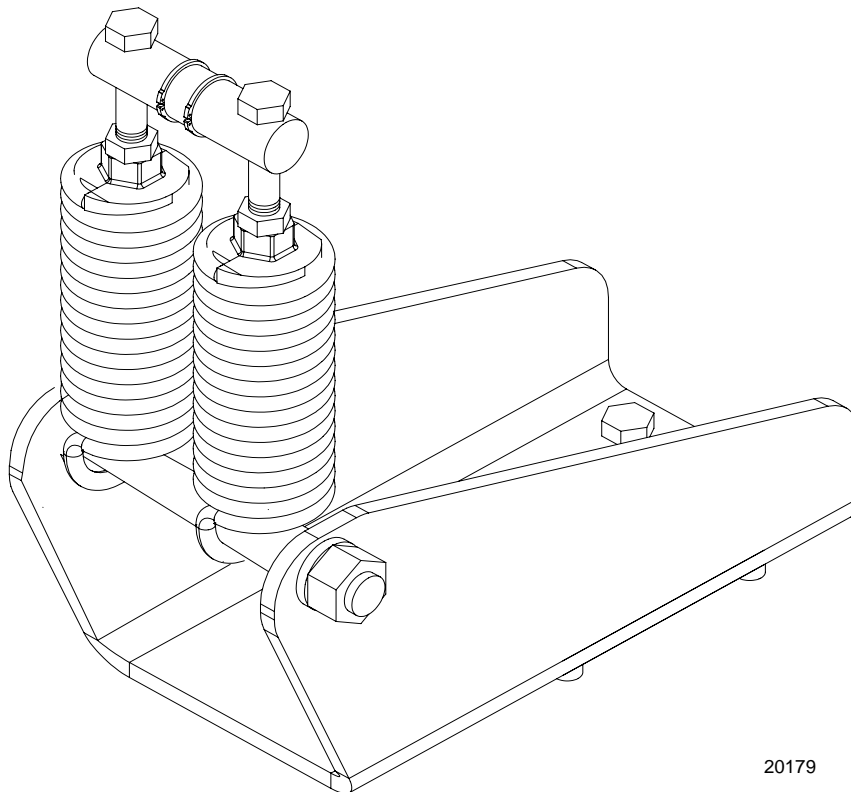
Page 3 is a detailed listing of parts included in the Auxiliary Down Pressure Spring Assembly option. Use this list to inventory parts received.

Tools Required

- Basic hand tools

Definitions

Right-hand and left-hand as used in this manual are determined by facing the direction the machine will travel while in use unless otherwise stated.



20179

2 Auxiliary Down Pressure Spring Assembly Option

Assembly Instructions

Refer to Figure 1

Note: Before performing this installation unfold the drill on level ground. Raise the drill to the transport position and install the transport locks. Turn the tractor off and remove the key.

1. Mount the down pressure spring anchor (1) to the drill frame at the holes (2). Place the anchor (1) so the holes for the spacer tube are facing towards the front of the drill. Use four 1/2" x 1 1/2" bolts, 1/2" lock washers and 1/2" nuts. Tighten bolts to secure anchor.

Note: If your drill does not have holes it will be necessary to drill them. Use dimensions in figure 2 for location.

2. Insert the spacer tube (4) through the loop ends of two of the spring assemblies (5). Align the spacer tube (4) between the two holes in the spring anchor (1) and secure it in place with a 3/4" x 7" bolt (6), 3/4" lock washer and 3/4" nut. Tighten bolt.
3. Locate the hole marked (8) in the contact wheel mounting arm. (This hole will be directly above the spacer tube holding the springs). Insert the down pressure spring rod (7) in hole (8) and hold it in place with a 1" external snap ring on each side of the arm.
4. Insert a 1/2" x 4" bolt (9) in each of the two holes located in the spring rod (7). Thread a 1/2" jam nut on each bolt then thread the bolts in to the tops of the springs (5).
5. Adjust the tension on the springs by screwing the bolts (9) down. Adjust to be 1/2" less tension than on original springs. Be sure to adjust the bolts evenly. This can be checked by measuring the distance between the top of the springs (5) and the top of the bolts (9). Do not adjust top bolt any closer than 1" to avoid premature bearing failure. When the desired tension has been set, lock bolts (9) in place with the 1/2" jam nuts.
6. Repeat above steps to install down pressure springs on the other contact wheel.

Refer to Figure 2

For drills without holes use the measurements in figure 2. Figure 2 shows measurements for the left-hand side of the drill, mirror the measurements to drill holes on the right-hand side of the drill.

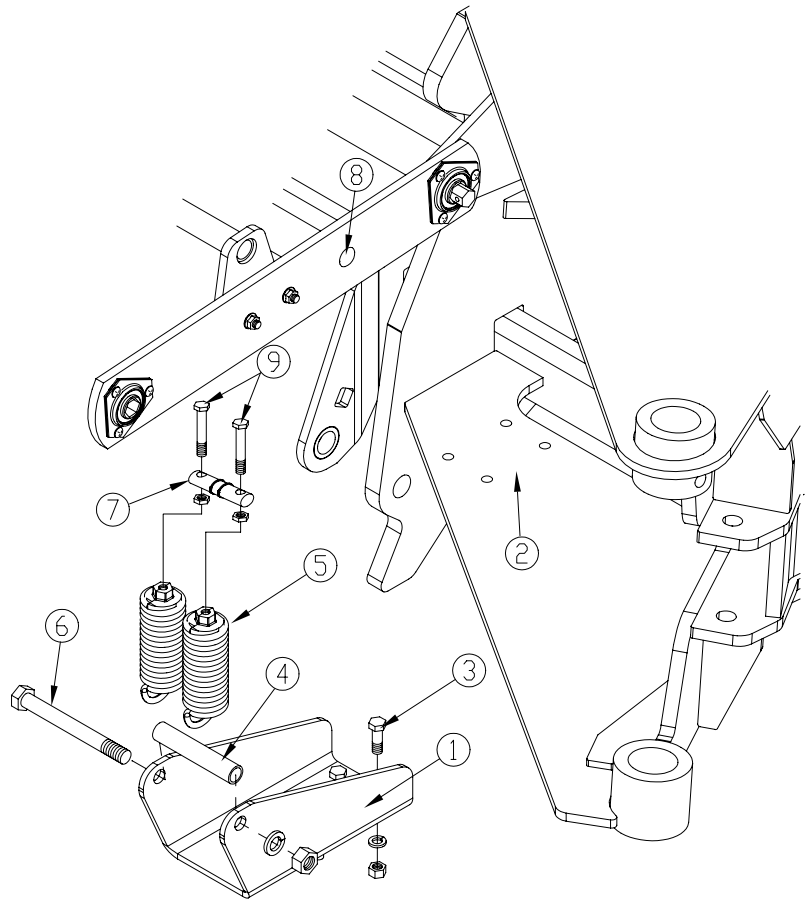


Figure 1
Installation

20178

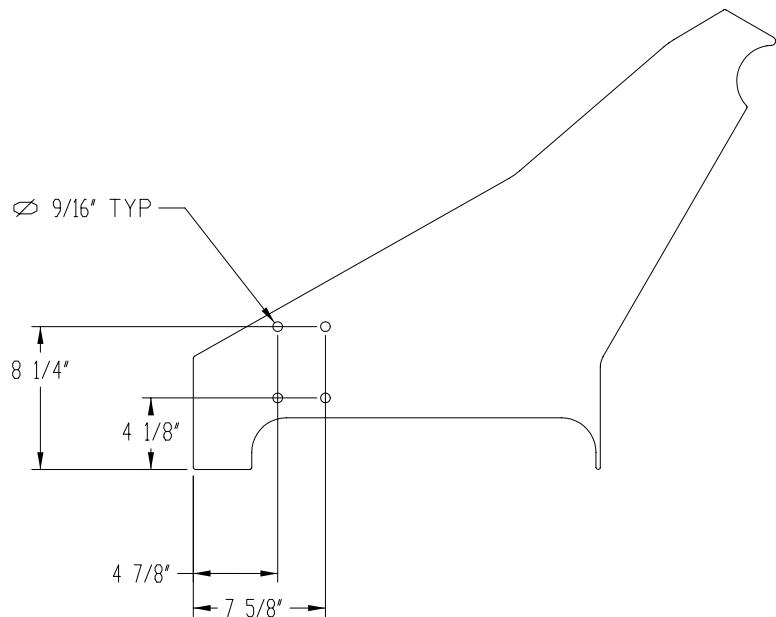


Figure 2
Dimensions

20177

198-957K Aux Down Pressure Spring Assy

Your kit includes:

Qty.	Part No.	Part Description
2	198-258D	DOWNPRESS SPRING ANCHOR
2	198-259D	DOWNPRESSURE SPRING ROD
2	198-260D	DP SPRING ANCHOR SPACER TUBE
1	198-962m	INSTALLATION MANUAL
4	204-005S	HD DOWN PRESSURE SPRING ASSY
4	800-085C	SNAP RING EXT 1 HEAVY
8	802-091C	HHCS 1/2-13X1 1/2 GR5
2	802-095C	HHCS 3/4-10X7 GR5
4	802-424C	HHCS 1/2-13X4 FTHD
8	803-020C	NUT HEX 1/2-13 PLT
2	803-027C	NUT HEX 3/4-10 PLT
4	803-036C	NUT HEX JAM 1/2-13 PLT
8	804-015C	WASHER LOCK SPRING 1/2 PLT
2	804-023C	WASHER LOCK SPRING 3/4 PLT