

# Update Instructions



## Precision Drills Rice Wheel 403-095D

### Used with:

- 1510P & 1520P
- 2010P & 2020P
- 2410P & 2420P
- 2520P
- 3N-3010P & 3N-3020P
- 3N-4010P, 3N-4015P & 3N-4020P



*When you see this symbol, the subsequent instructions and warnings are serious - follow without exception. Your life and the lives of others depend on it!*

## General Information

These instructions explain how to install the Rice Flow Gate & Wheel upate. This modification improves the performance and reliability of the original equipment.

These instructions apply to:

403-110A RICE FLOW GATE & WHEEL UPDATE

118-769M Operator's Manual  
118-769P Parts Manual

118-863M Operator's Manual  
118-863P Parts Manual

196-248M Operator's Manual  
196-248P Parts Manual

196-286M Operator's Manual  
196-286P Parts Manual

### Manual Update

Refer to your Precision Drill operator's manual for detailed information on safely operating, adjusting, troubleshooting and maintaining your Precision Drill. Refer to the parts manual for part identification.

118-732M Operator's Manual  
118-732P Parts Manual

118-740M Operator's Manual  
118-740P Parts Manual

### Before You Start

Page 3 is a detailed listing of parts included in the Rice Flow Gate & Wheel Update. Use this list to inventory parts received.

### Tools Required

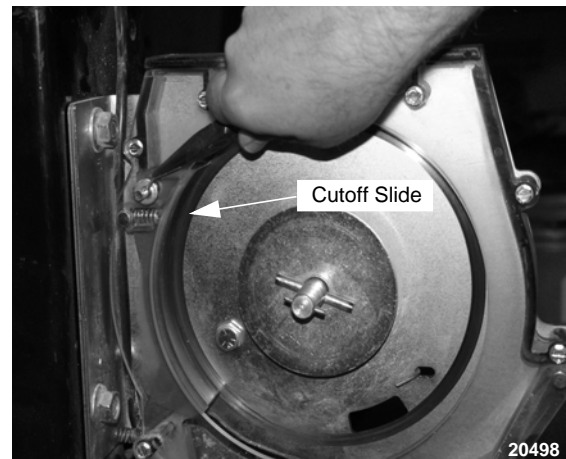
- General hand tools

## Assembly Instructions

1. Before beginning update, shut off grain flow to meter, clean out meter and remove seed wheel. For more information on this procedure, see your Operator's Manual.

*Refer to Figure 1*

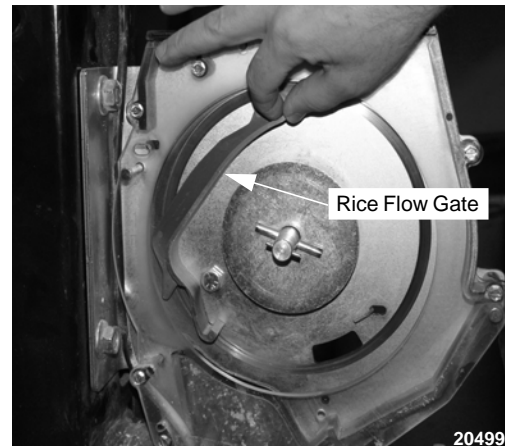
2. Remove cotter pin from slide retaining pin. Take out pin and remove cutoff slide. Discard cutoff slide.



**Figure 1**

*Refer to Figure 2*

3. Install new rice flow gate using new pin and cotter pin. Install rice seed wheel.



**Figure 2**

4. NOTE: In order for seed meter to operator correctly with other seed wheels, you must remove the rice flow gate and replace it with the new cutoff slide, P/N 817-405C, which is provided in the update kit. The rice flow gate is to be used only with rice seed wheel, P/N 403-095D.

---

## 403-110A RICE FLOW GATE & WHEEL UPDATE

Your kit includes:

Qty.	Part No.	Part Description
1	403-095D	PSS HIGH RATE RICE-RIBBON
1	805-010C	PIN HAIR COTTER .094
1	805-339C	PIN CLEVIS 1/4 X 2 HEADED
2	807-186C	SPRING COMP .39ODX.75LGX.04
1	807-194C	SPRING COMP .39ODX.69LX.043
1	817-405C	METER SEED CUTOFF SLIDE
1	817-529C	FLOW GATE

## Rice (High Rate) 15P

### Wheel P/N 403-095D (With Required Flow Gate P/N 817-529C)

45 lb. bu. CYPRESS Rice No Seed Treatment with Talc			7 1/2" Row Spacing	10" Row Spacing	15" Row Spacing
			Range Sprockets Driver = 15 Driven = 30	Range Sprockets Driver = 20 Driven = 30	Range Sprockets Driver = 30 Driven = 30
Transmission Sprockets		Seed Rate (pounds/acre)	Max Plant speed (mph)	Max Plant speed (mph)	Max Plant speed (mph)
Driver	Driven				
17	28	44.5	8	8	8
17	27	46.2	8	8	8
17	26	48.0	8	8	8
19	28	49.8	8	8	8
17	25	49.9	8	8	8
19	27	51.6	8	8	8
17	24	52.0	8	8	8
19	26	53.6	8	8	8
17	23	54.2	8	8	8
19	25	55.8	8	8	8
19	24	58.1	8	8	8
23	28	60.3	8	8	8
19	23	60.6	8	8	8
23	27	62.6	8	8	8
24	28	62.9	8	8	8
23	26	64.9	8	8	8
24	27	65.2	8	8	8
25	28	65.5	8	8	7
17	19	65.6	8	8	7
23	25	67.5	8	8	7
24	26	67.7	8	8	7
25	27	67.9	8	8	7
26	28	68.1	8	8	7
23	24	70.3	8	8	7
24	25	70.4	8	8	7
25	26	70.5	8	8	7
26	27	70.7	8	8	7
27	28	70.8	8	8	7
23	23	73.4	8	8	7
28	27	76.1	8	8	6
27	26	76.2	8	8	6
26	25	76.3	8	8	6
25	24	76.4	8	8	6
24	23	76.6	8	8	6
28	26	79.0	8	8	6
27	25	79.2	8	8	6
26	24	79.5	8	8	6
25	23	79.8	8	8	6
19	17	82.0	8	8	6
28	25	82.2	8	8	6
27	24	82.5	8	8	6
26	23	82.9	8	8	6
28	24	85.6	8	8	6
27	23	86.1	8	8	6
23	19	88.8	8	8	5
28	23	89.3	8	8	5
24	19	92.7	8	8	5
25	19	96.5	8	8	5
23	17	99.3	8	7	5
26	19	100.4	8	7	5
24	17	103.6	8	7	5
27	19	104.3	8	7	5
25	17	107.9	8	7	4
28	19	108.1	8	7	4
26	17	112.2	8	6	4
27	17	116.5	8	6	4
28	17	120.8	8	6	4

**Rice 20P**

**Wheel P/N 403-095D (With Required Flow Gate P/N 817-529C)**

45 lb. bu. CYPRESS Rice No Seed Treatment with Talc			7 1/2" Row Spacing	10" Row Spacing	15" Row Spacing
			Range Sprockets Driver = 15 Driven = 30	Range Sprockets Driver = 20 Driven = 30	Range Sprockets Driver = 30 Driven = 30
Transmission Sprockets		Seed Rate (pounds/acre)	Max Plant speed (mph)	Max Plant speed (mph)	Max Plant speed (mph)
Driver	Driven				
17	28	43.5	8	8	8
17	27	45.1	8	8	8
17	26	46.9	8	8	8
19	28	48.6	8	8	8
17	25	48.8	8	8	8
19	27	50.5	8	8	8
17	24	50.8	8	8	8
19	26	52.4	8	8	8
17	23	53.0	8	8	8
19	25	54.5	8	8	8
19	24	56.8	8	8	8
23	28	58.9	8	8	8
19	23	59.2	8	8	8
23	27	61.1	8	8	8
24	28	61.5	8	8	8
23	26	63.4	8	8	8
24	27	63.7	8	8	8
25	28	64.0	8	8	8
17	19	64.1	8	8	8
23	25	66.0	8	8	7
24	26	66.2	8	8	7
25	27	66.4	8	8	7
26	28	66.6	8	8	7
23	24	68.7	8	8	7
24	25	68.8	8	8	7
25	26	68.9	8	8	7
26	27	69.0	8	8	7
27	28	69.1	8	8	7
23	23	71.7	8	8	7
28	27	74.3	8	8	7
27	26	74.5	8	8	7
26	25	74.6	8	8	7
25	24	74.7	8	8	6
24	23	74.8	8	8	6
28	26	77.2	8	8	6
27	25	77.4	8	8	6
26	24	77.7	8	8	6
25	23	77.9	8	8	6
19	17	80.1	8	8	6
28	25	80.3	8	8	6
27	24	80.7	8	8	6
26	23	81.0	8	8	6
28	24	83.6	8	8	6
27	23	84.2	8	8	6
23	19	86.8	8	8	6
28	23	87.3	8	8	5
24	19	90.6	8	8	5
25	19	94.3	8	8	5
23	17	97.0	8	8	5
26	19	98.1	8	7	5
24	17	101.2	8	7	5
27	19	101.9	8	7	5
25	17	105.4	8	7	4
28	19	105.7	8	7	4
26	17	109.6	8	7	4
27	17	113.9	8	6	4
28	17	118.1	8	6	4

## Rice (High Rate) 24P

### Wheel P/N 403-095D (With Required Flow Gate P/N 817-529C)

45 lb. bu. CYPRESS Rice No Seed Treatment with Talc			7 1/2" Row Spacing	10" Row Spacing	15" Row Spacing
			Range Sprockets Driver = 15 Driven = 30	Range Sprockets Driver = 20 Driven = 30	Range Sprockets Driver = 30 Driven = 30
Transmission Sprockets		Seed Rate (pounds/acre)	Max Plant speed (mph)	Max Plant speed (mph)	Max Plant speed (mph)
Driver	Driven				
17	28	43.5	8	8	8
17	27	45.1	8	8	8
17	26	46.9	8	8	8
19	28	48.6	8	8	8
17	25	48.8	8	8	8
19	27	50.5	8	8	8
17	24	50.8	8	8	8
19	26	52.4	8	8	8
17	23	53.0	8	8	8
19	25	54.5	8	8	8
19	24	56.8	8	8	8
23	28	58.9	8	8	8
19	23	59.2	8	8	8
23	27	61.1	8	8	8
24	28	61.5	8	8	8
23	26	63.4	8	8	8
24	27	63.7	8	8	8
25	28	64.0	8	8	8
17	19	64.1	8	8	8
23	25	66.0	8	8	7
24	26	66.2	8	8	7
25	27	66.4	8	8	7
26	28	66.6	8	8	7
23	24	68.7	8	8	7
24	25	68.8	8	8	7
25	26	68.9	8	8	7
26	27	69.0	8	8	7
27	28	69.1	8	8	7
23	23	71.7	8	8	7
28	27	74.3	8	8	7
27	26	74.5	8	8	7
26	25	74.6	8	8	7
25	24	74.7	8	8	6
24	23	74.8	8	8	6
28	26	77.2	8	8	6
27	25	77.4	8	8	6
26	24	77.7	8	8	6
25	23	77.9	8	8	6
19	17	80.1	8	8	6
28	25	80.3	8	8	6
27	24	80.7	8	8	6
26	23	81.0	8	8	6
28	24	83.6	8	8	6
27	23	84.2	8	8	6
23	19	86.8	8	8	6
28	23	87.3	8	8	5
24	19	90.6	8	8	5
25	19	94.3	8	8	5
23	17	97.0	8	8	5
26	19	98.1	8	7	5
24	17	101.2	8	7	5
27	19	101.9	8	7	5
25	17	105.4	8	7	4
28	19	105.7	8	7	4
26	17	109.6	8	7	4
27	17	113.9	8	6	4
28	17	118.1	8	6	4

## Rice (High Rate) 25P

### Wheel P/N 403-095D (With Required Flow Gate P/N 817-529C)

45 lb. bu. CYPRESS Rice No Seed Treatment with Talc			9 1/2" Row Spacing	8/10/10/10 Row Spacing
			Range Sprockets Driver = 15 Driven = 30	Range Sprockets Driver = 15 Driven = 30
Transmission Sprockets		Seed Rate (pounds/acre)	Max Plant speed (mph)	Max Plant speed (mph)
Driver	Driven			
17	28	43.6	8	8
17	27	45.3	8	8
17	26	47.0	8	8
19	28	48.8	8	8
17	25	48.9	8	8
19	27	50.6	8	8
17	24	50.9	8	8
19	26	52.5	8	8
17	23	53.1	8	8
19	25	54.6	8	8
19	24	56.9	8	8
23	28	59.0	8	8
19	23	59.4	8	8
23	27	61.2	8	8
24	28	61.6	8	8
23	26	63.6	8	8
24	27	63.9	8	8
25	28	64.2	8	8
17	19	64.3	8	8
23	25	66.1	8	8
24	26	66.3	8	8
25	27	66.5	8	8
26	28	66.7	8	8
23	24	68.9	8	8
24	25	69.0	8	8
25	26	69.1	8	8
26	27	69.2	8	8
27	28	69.3	8	8
23	23	71.9	8	8
28	27	74.5	8	8
27	26	74.6	8	8
26	25	74.7	8	8
25	24	74.9	8	8
24	23	75.0	8	8
28	26	77.4	8	8
27	25	77.6	8	8
26	24	77.9	8	8
25	23	78.1	8	8
19	17	80.3	8	8
28	25	80.5	8	8
27	24	80.9	8	8
26	23	81.2	8	8
28	24	83.9	8	8
27	23	84.4	8	8
23	19	87.0	8	8
28	23	87.5	8	8
24	19	90.8	8	8
25	19	94.6	8	8
23	17	97.2	8	8
26	19	98.4	8	8
24	17	101.5	8	8
27	19	102.1	8	8
25	17	105.7	7	7
28	19	105.9	7	7
26	17	109.9	7	7
27	17	114.2	7	7
28	17	118.4	6	6

## Rice (High Rate) 30P

### Wheel P/N 403-095D (With Required Flow Gate P/N 817-529C)

45 lb. bu. CYPRESS Rice No Seed Treatment with Talc			7 1/2" Row Spacing	10" Row Spacing	15" Row Spacing
			Range Sprockets Driver = 15 Driven = 30	Range Sprockets Driver = 20 Driven = 30	Range Sprockets Driver = 30 Driven = 30
Transmission Sprockets		Seed Rate (pounds/acre)	Max Plant speed (mph)	Max Plant speed (mph)	Max Plant speed (mph)
Driver	Driven				
17	28	43.3	8	8	8
17	27	44.9	8	8	8
17	26	46.6	8	8	8
19	28	48.4	8	8	8
17	25	48.5	8	8	8
19	27	50.2	8	8	8
17	24	50.5	8	8	8
19	26	52.1	8	8	8
17	23	52.7	8	8	8
19	25	54.2	8	8	8
19	24	56.5	8	8	8
23	28	58.6	8	8	8
19	23	58.9	8	8	8
23	27	60.8	8	8	8
24	28	61.1	8	8	8
23	26	63.1	8	8	8
24	27	63.4	8	8	8
25	28	63.7	8	8	8
17	19	63.8	8	8	8
23	25	65.6	8	8	7
24	26	65.8	8	8	7
25	27	66.0	8	8	7
26	28	66.2	8	8	7
23	24	68.4	8	8	7
24	25	68.5	8	8	7
25	26	68.6	8	8	7
26	27	68.7	8	8	7
27	28	68.8	8	8	7
23	23	71.3	8	8	7
28	27	74.0	8	8	7
27	26	74.1	8	8	7
26	25	74.2	8	8	7
25	24	74.3	8	8	6
24	23	74.4	8	8	6
28	26	76.8	8	8	6
27	25	77.0	8	8	6
26	24	77.3	8	8	6
25	23	77.5	8	8	6
19	17	79.7	8	8	6
28	25	79.9	8	8	6
27	24	80.2	8	8	6
26	23	80.6	8	8	6
28	24	83.2	8	8	6
27	23	83.7	8	8	6
23	19	86.3	8	8	6
28	23	86.8	8	8	5
24	19	90.1	8	8	5
25	19	93.9	8	8	5
23	17	96.5	8	8	5
26	19	97.6	8	7	5
24	17	100.7	8	7	5
27	19	101.4	8	7	5
25	17	104.9	8	7	4
28	19	105.1	8	7	4
26	17	109.1	8	7	4
27	17	113.3	8	6	4
28	17	117.5	8	6	4